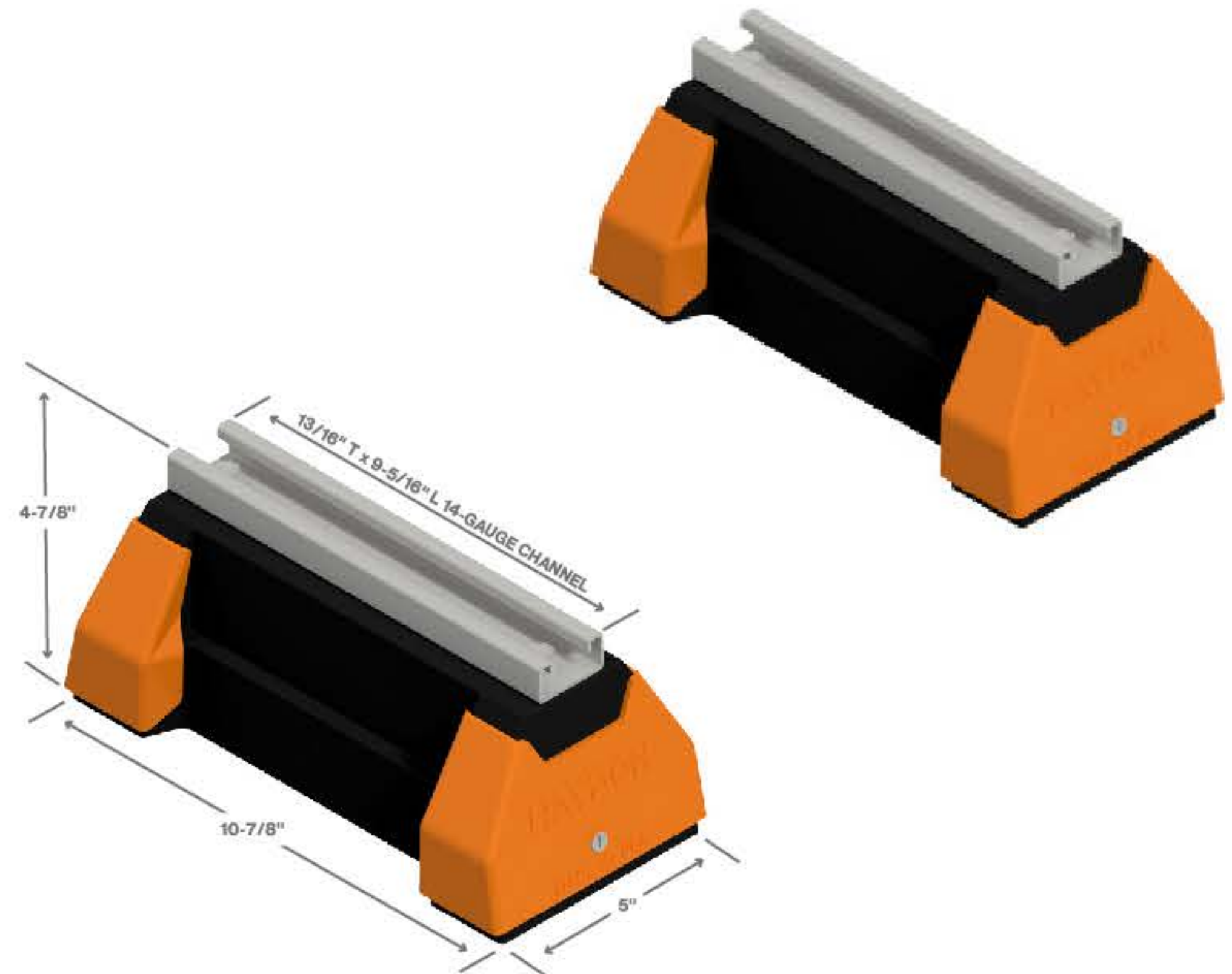


H-BLOCK® Standard Series

H-Block Standard Support Series with $\frac{13}{16}$ " H-164 Pre-Galvanized Steel Channel

H-Block Standard Rooftop Support Series is ideal for supporting natural gas and refrigeration piping systems, cable trays, electrical conduit, multiple lines, HVAC equipment and many other applications. The H-Block Standard Series provides a mounting surface with strut lengths up to 8'. Standard strut mount pipe clamps are used to secure the pipes. The H-Block Standard Rooftop Support Series has $\frac{13}{16}$ " H-164 pre-galvanized steel channel and is UV resistant and suitable for installation on most types of roofing material or other flat surfaces.



SPECIFICATIONS

General

H-Block Rooftop Support Bases are manufactured in the United States from domestically sourced, 100% recycled rubber and molded into shape. UV resistant and without harsh edges, the block is suitable for most roofing materials, membranes, or other flat surfaces such as asphalt, rubber and concrete. When installation dictates the block be placed on a smooth surface such as tile or steel, the installation will require an H-Pad Slip Sheet.

Material

- H-Block rubber bases: 100% recycled rubber, UV resistant
- End caps: high visibility ANSI Z535.1 safety orange
- Strut channel: Pre-galvanized steel in accordance with ASTM A653 SS Grade 33, G90
- Contact Haydon for other material options

Testing

H-Block Rooftop Supports have been tested by an accredited independent laboratory to meet the following:

- Compression/deflectionASTM D575 Modified
- Ozone resistance ASTM D1171 Modified
- Freeze/thaw environmental simulation..... Load tested after 3 cycles to -40°C

Usage

- Referenced loads are only for the capacity of the components in this assembly. Please consult the roofing manufacturer or engineer for roof load capacity.
- Strut Torque Setting: all load capacities stated herein are based on the use of Haydon Grip Lock Nuts tightened to the torque values shown in the technical section of the Haydon Engineering Catalog. When attaching H-STRUT® to H-Blocks, the recommended bolt torque settings are 10 to 12 ft-lbs.

